



Description

Exclusively new on the market comes this spacious Ground Floor Elevated Maisonette consisting of a large entrance open-plan kitchen -living -dining leading to a front balcony, 3 double bedrooms & 2 of which have an en-suite, main bathroom, internal yard and back yard. Property is being sold in shell form with an optional 2 car garage starting from €55,000

Features

- | | | | |
|------------------------------------|---------------------|--------------|-------------------|
| - Internal sq.m: 170 | - External sq.m: 30 | - 3 bedrooms | - 3 bathrooms |
| - Ground Floor | - Internal Yard | - Back Yard | - 1 Front Balcony |
| - Basement 2 Car (Optional) garage | | | |

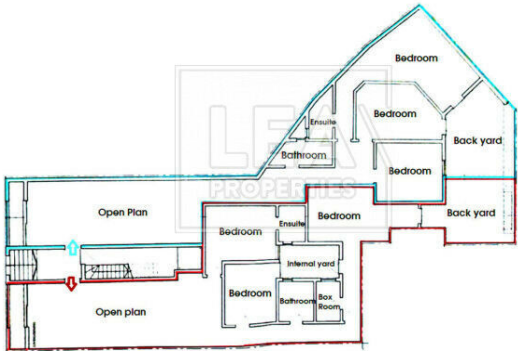
Contact Agent

Stephen Cassar

Mobile: 99472608

Email: stephen@leaproperties.com





Architect: Winifred
Box to be built on and used