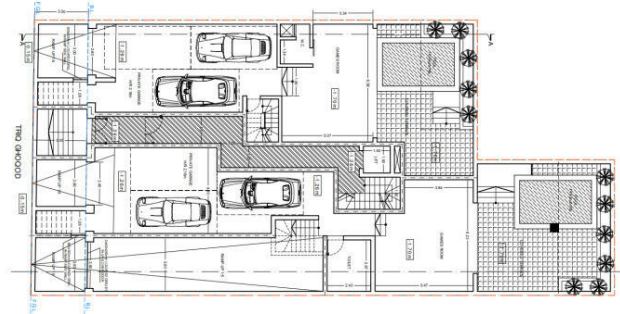


Semi-basement level 2D plan



**Duplex Maisonette
Semi-basement level plan**



Description

New on the market comes this large 3 bedroom duplex maisonette consist of Large open plan, Sitting room, Kitchen/Living/Dining, 3 Double Bedrooms, 3 Bathrooms(One ensuite & laundry room), Staircase leading to semi-basement with, a 3 car garage, games room, Indoor pool & spare toilet. Must me seen !!! completion date march 2025

Features

- | | | | |
|----------------------|------------------------------|--------------|---------------|
| - Internal sq.m: 256 | - External sq.m: 73 | - 3 bedrooms | - 3 bathrooms |
| - Ground Floor | - Internal Yard | - Back Yard | - Pool |
| - Laundry | - Semi-basement 3 Car garage | | |

Contact Agent

Stephen Cassar

Mobile: 99472608

Email: stephen@leaproperties.com



**Duplex Maisonette
ground floor plan**

