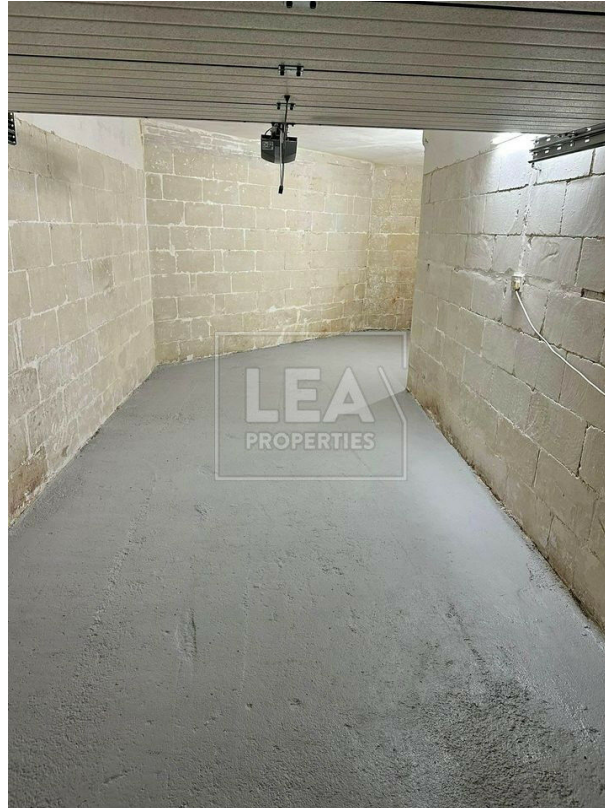


Garage

Semi Finished

Ref No: 11949

Euro 50,000



## Description

NEW ON THE MARKET &#8211; comes this Basement Level 2 car garage being sold finished including a lock up door. Situated in St. Thomas area. Measurements circa 10 feet by 32 feet. Freehold. ! MUST BE SEEN !

## Features

- Internal sq.m: 12.8
- Basement

## Contact Agent

Alan Micallef

Mobile: 99269924

Email: [alan@leaproperties.com](mailto:alan@leaproperties.com)